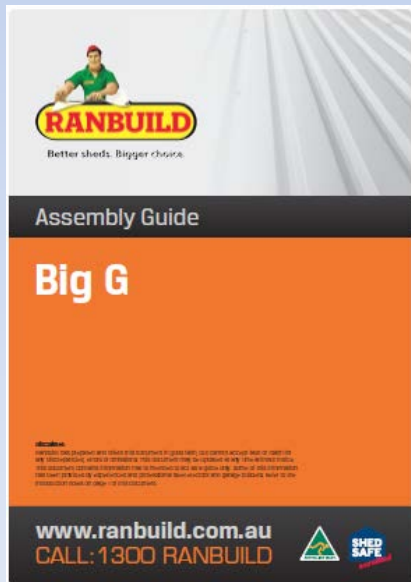
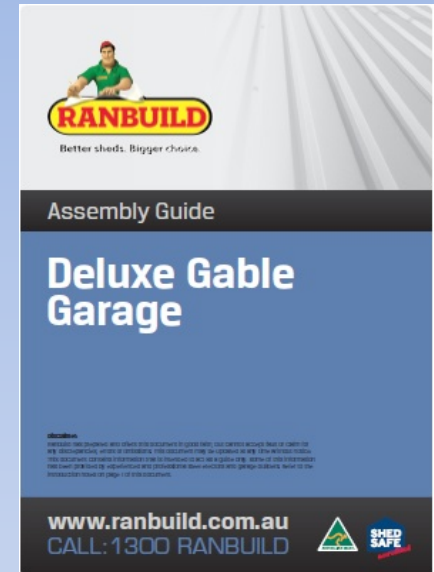
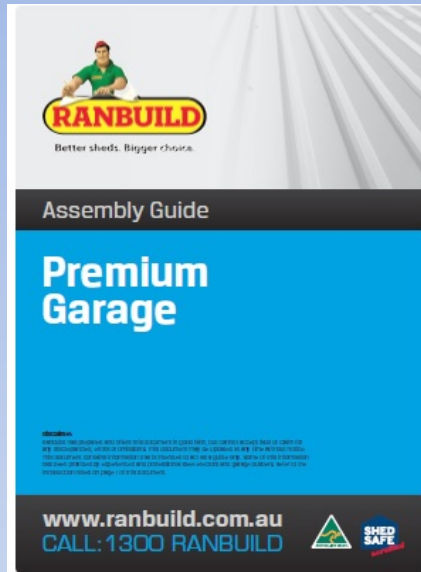
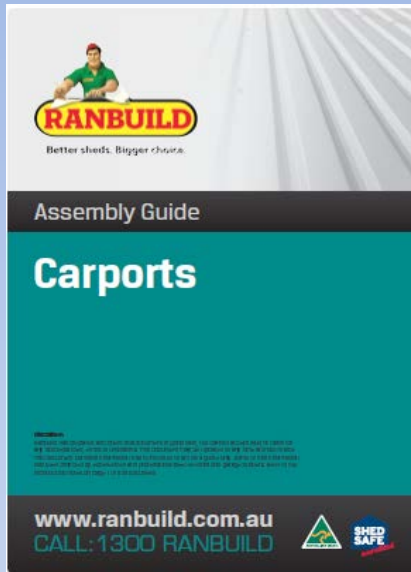


# DOMESTIC



# RANBUILD

# Assembly guides



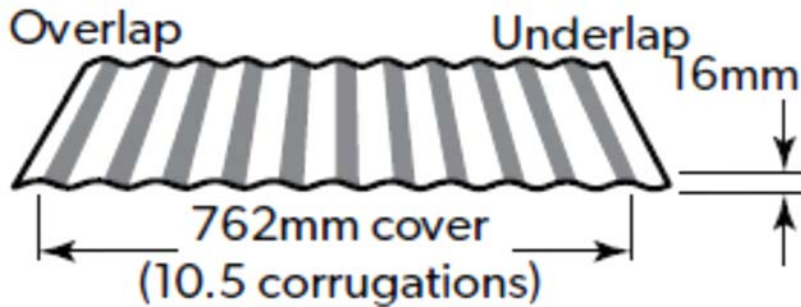
[Downloads](#)
[Support Centre](#)
[Business Centre](#)
[Sheduler](#)

## Downloads - Assembly Guides

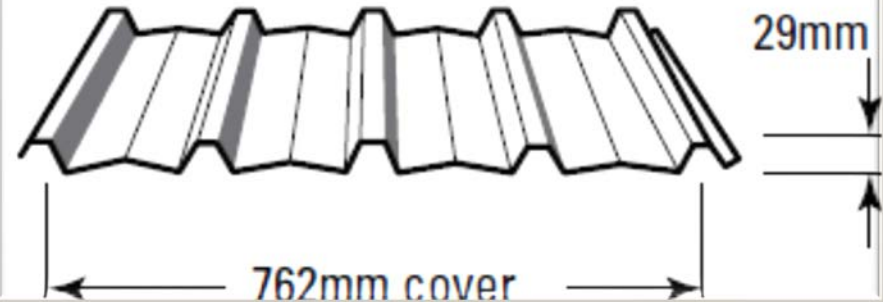
Type	Name	Description
	<a href="#">Barn and Stable Assembly Guide</a>	The latest RDS Assembly Guide for Barn and Stable
	<a href="#">Carport Assembly Guide</a>	The latest RDS Assembly Guide for Carports
	<a href="#">Big G Assembly Guide</a>	The latest RDS Assembly Guide for Big G
	<a href="#">Covermaster Cee Assembly Guide</a>	The latest RDS Assembly Guide for Covermaster Cee

# Sheeting Options

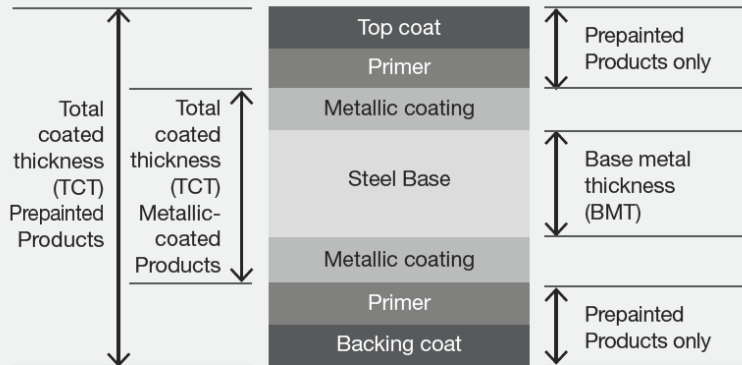
## CUSTOM ORB®



## LYSAGHT TRIMDEK®

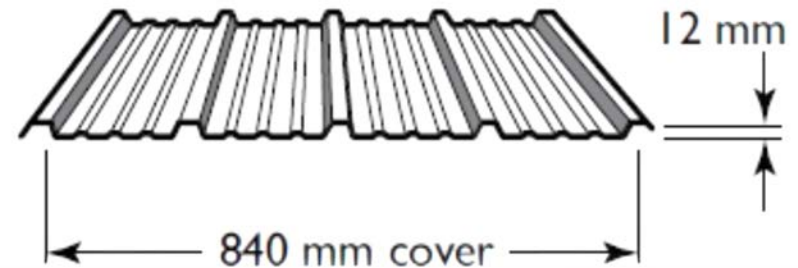


### Base Metal Thickness (BMT) V Total Coated Thickness (TCT)



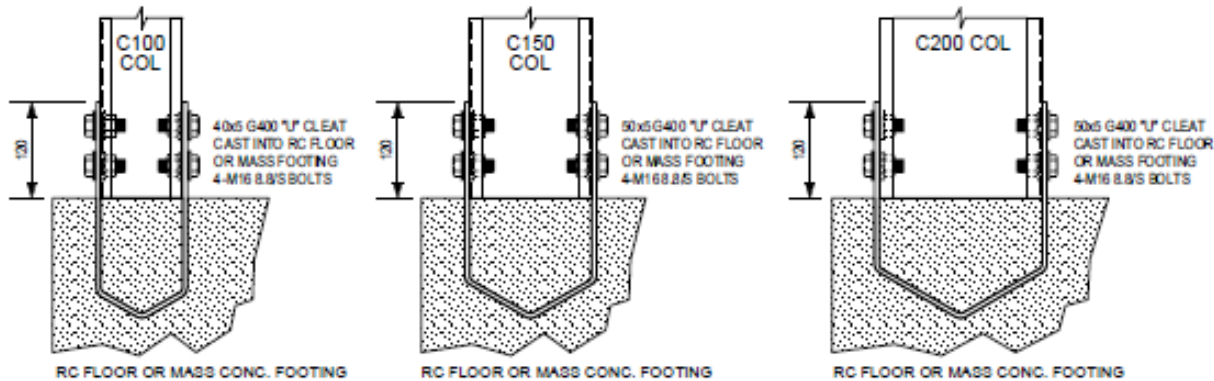
Structural capability is a function of base metal thickness and steel grade, whereas corrosion performance is afforded by metallic coating thickness and type.

## LYSAGHT MULTICLAD®

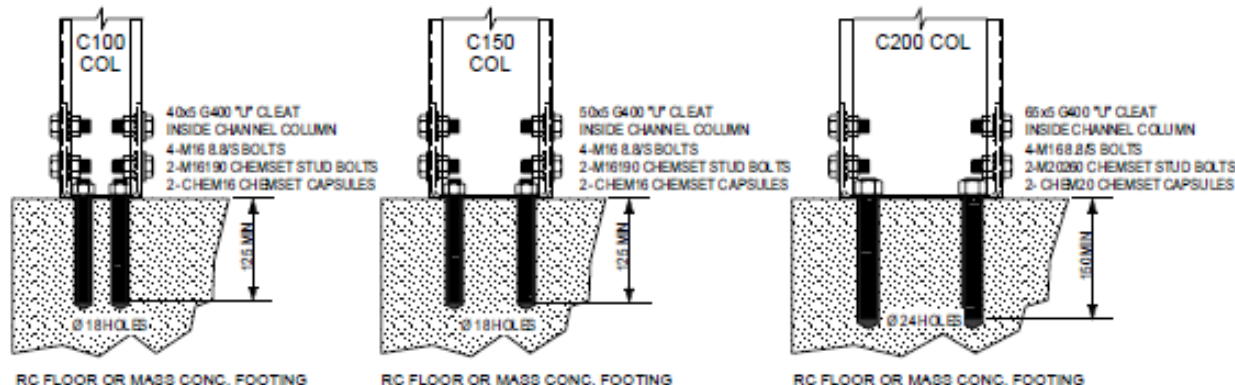


# Base Connections

**STANDARD RANBUILD SUNDOWN SUPER AND DELUXE FIXED BASES SPECIFIED ON CONNECTION DRAWINGS:**  
NECON2000, SD/E & O-V41N-ES, SD/E & O-V49N-SS, SD/E & O-V49N-ES, SD/E & O-V57C-SS and SD/E & O-V57C-ES



**ALTERNATIVE RANBUILD SUNDOWN SUPER AND DELUXE FIXED BASES CONNECTIONS**  
CHEMSET MASONRY ANCHORS TO BE INSTALLED IN ACCORDANCE WITH THE MANUFACTURERS INSTRUCTIONS.  
REPRODUCED AT RIGHT.  
MINIMUM CONCRETE COMPRESSIVE STRENGTH 20 MPa

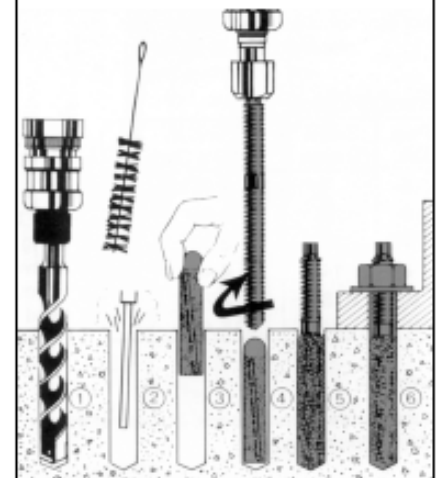


## CHEMSET MASONRY ANCHOR INSTALLATION

1. Drill correct diameter hole to recommended depths shown below.
2. Clean hole thoroughly with a wire brush and remove all dust and debris by means of compressed air or hand pump etc.
3. Insert CHEMSET capsule.
4. Drill the stud bolt into the capsule using a hammer drill.
5. Allow to cure.  
Recommended curing times

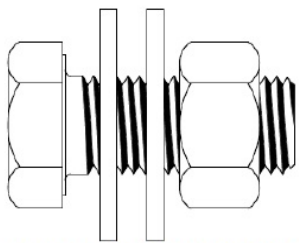
+20°C	10° - 20°C	0° - 10°C	-5° - 0°C
10 min	20 min	1 hour	5 hours

6. Attach cleat.

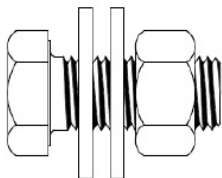




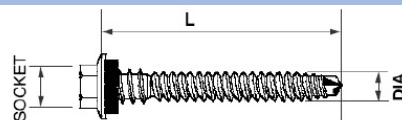
# Fasteners



**HT6** - M16x40 HEX BOLT 8.8S, ALWAYS USE WITH 2 **W16** (Ø16 WASHER)

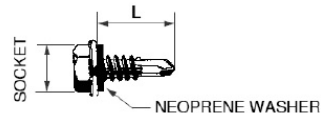


**HT2** - M12x55 HEX BOLT  
**HT5** - M12x30 HEX BOLT 8.8.S  
ALWAYS USE WITH 2 **W12** (Ø12 WASHER)



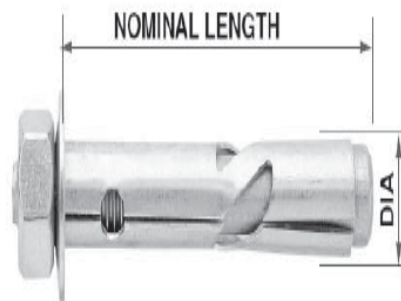
**ROOF CLADDING  
GENERAL PURPOSE CREST FASTENER**

Part No.	DIA	GAUGE-TPIxL	SOCKET
TEK23	5.5	#12-14x35	5/16"
TEK24	5.5	#12-14x45	5/16"
TEK28	6.3	#14-10x50	3/8"
TEK29	6.3	#14-10x65	3/8"
TEK41	5.5	#12-14x50	5/16"
TEK42	5.5	#12-14x50	5/16"



**WALL CLADDING PAN FASTENER**

Part No.	DIA	GAUGE-TPIxL	SOCKET
TEK1	4.8	#10-16x16	5/16"
TEK16	6.3	#14-10x25	5/16"
TEK4	5.5	#12-14x35	5/16"



**DYNABOLT MASONRY ANCHOR**

Part No.	DIA and Drill DIA	Nominal Length	Drill Depth
D8042	8	42	45
D10040	10	40	45
D12055	12	55	64
D16060	16	65	70

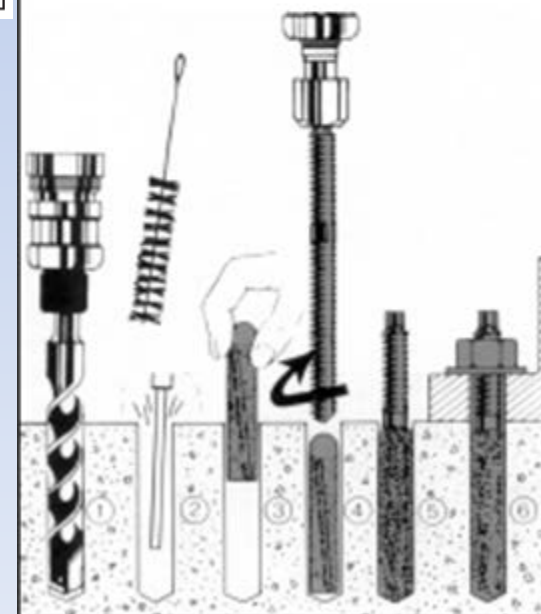
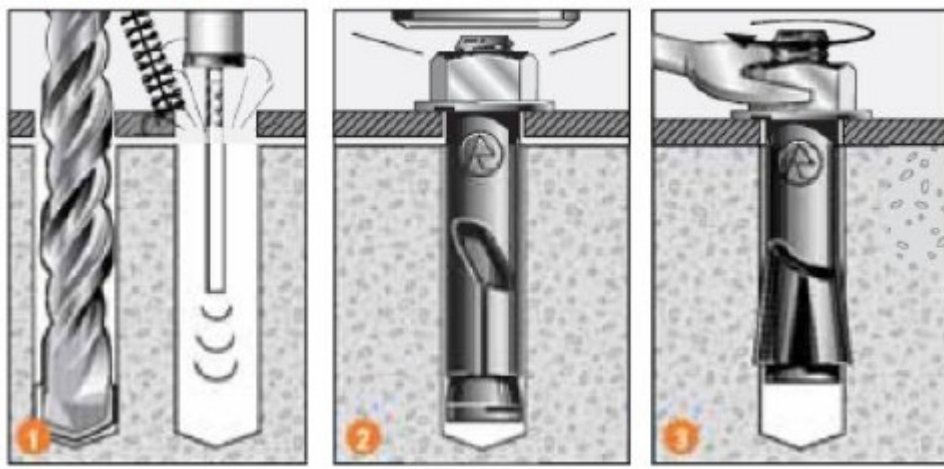
## **CHEMSET MASONRY ANCHOR INSTALLATION**

1. Drill correct diameter hole to recommended depths shown below.
2. Clean hole thoroughly with a wire brush and remove all dust and debris by means of compressed air or hand pump etc.
3. Insert CHEMSET capsule.
4. Drill the stud bolt into the capsule using a hammer drill.
5. Allow to cure.  
Recommended curing times

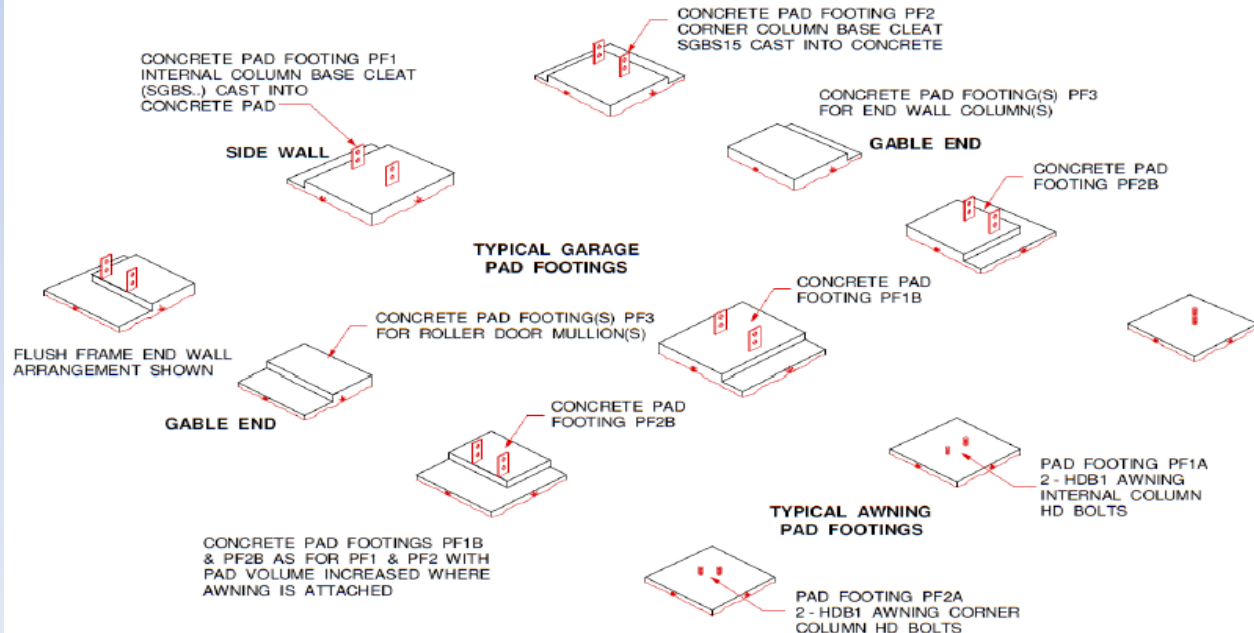
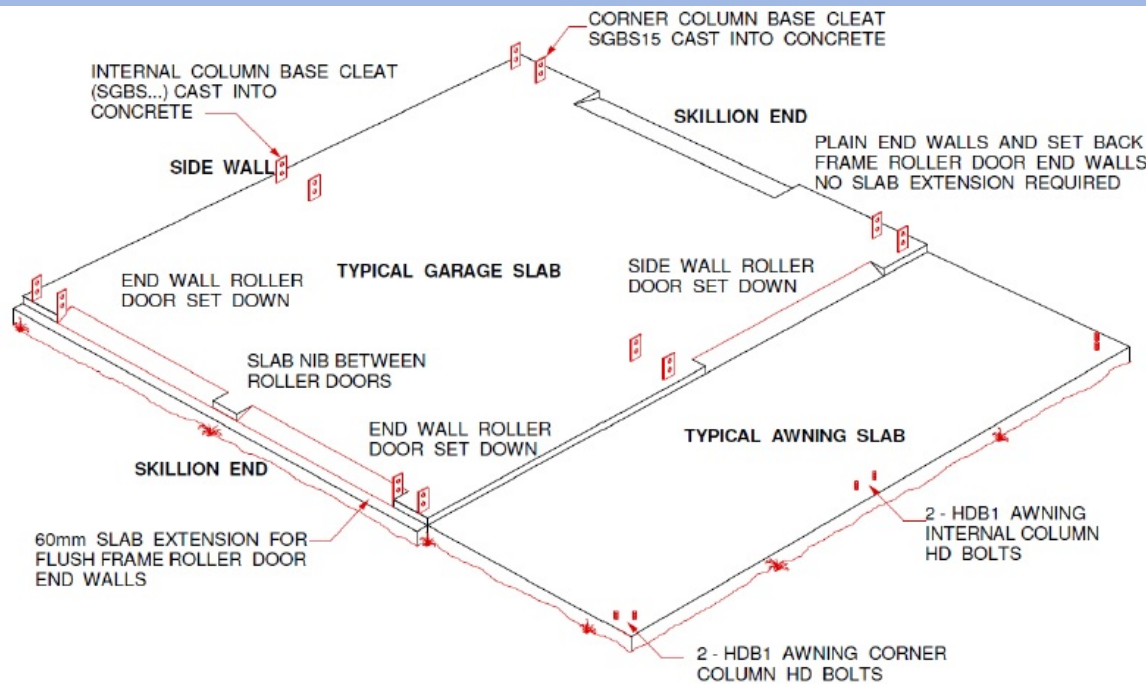
+20°C	10° - 20°C	0° - 10°C	-5° - 0°C
10 min	20 min	1 hour	5 hours

6. Attach cleat.

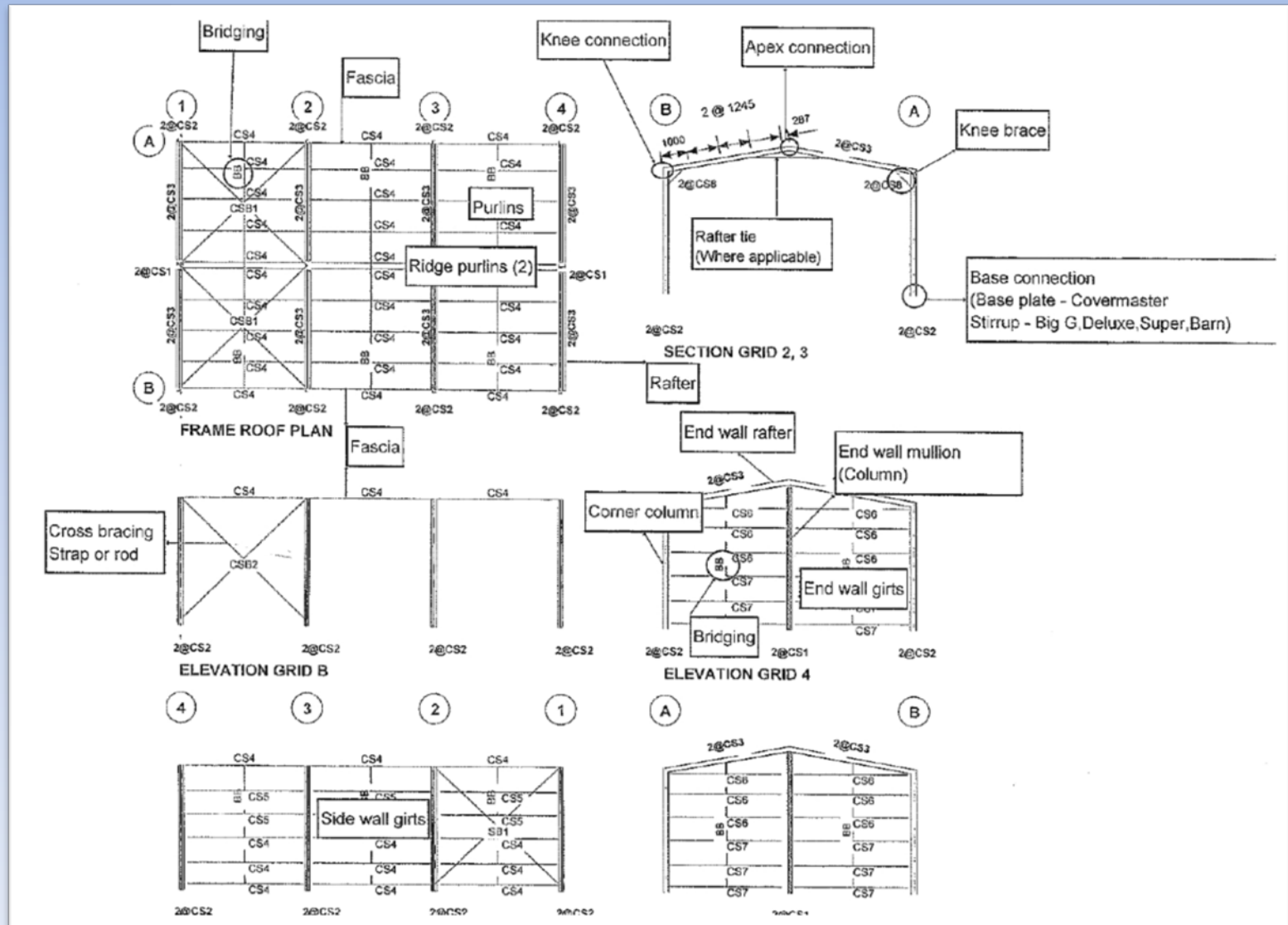
## **Installation**



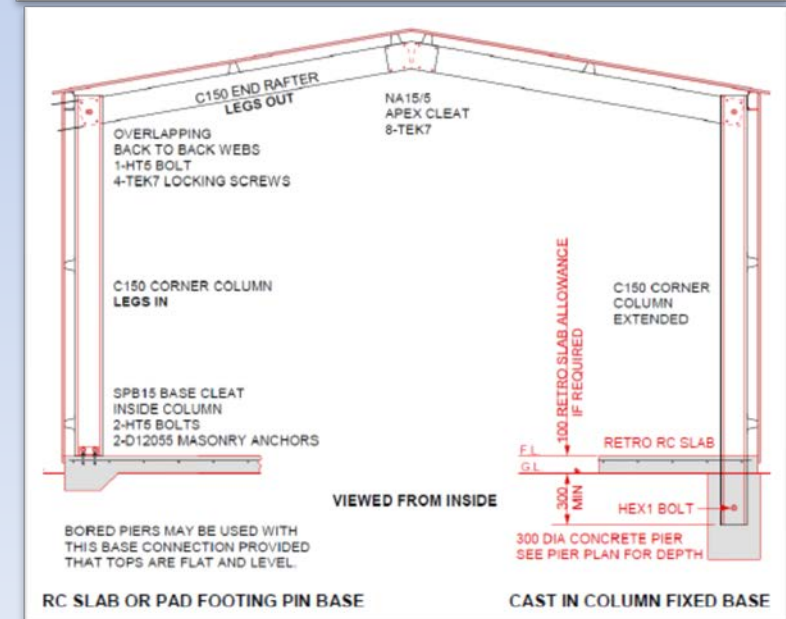
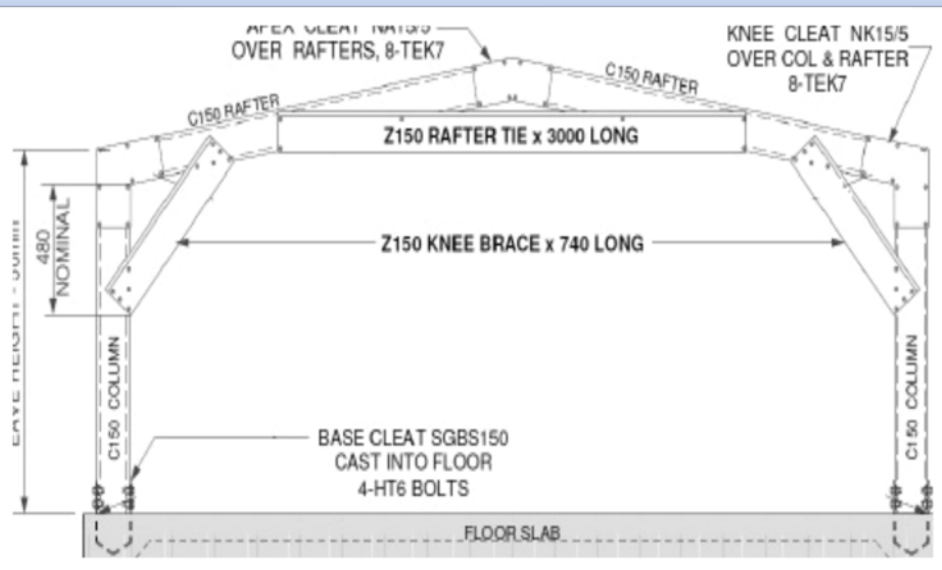
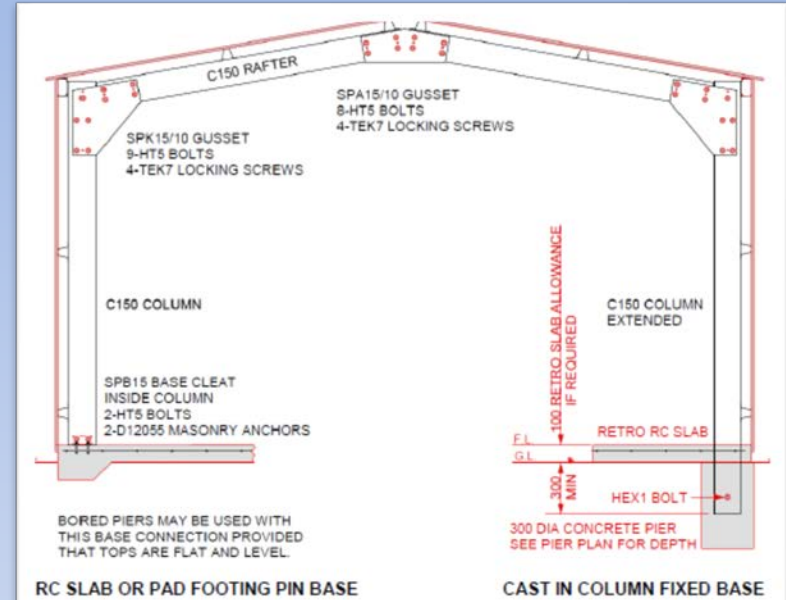
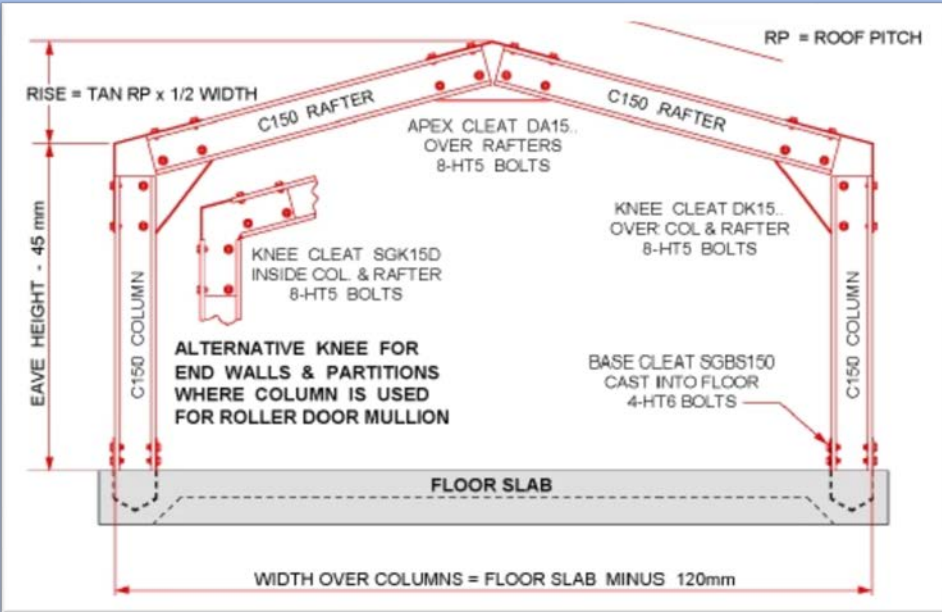
# Typical Slab Arrangement & Pad Footings



# Component Identifier

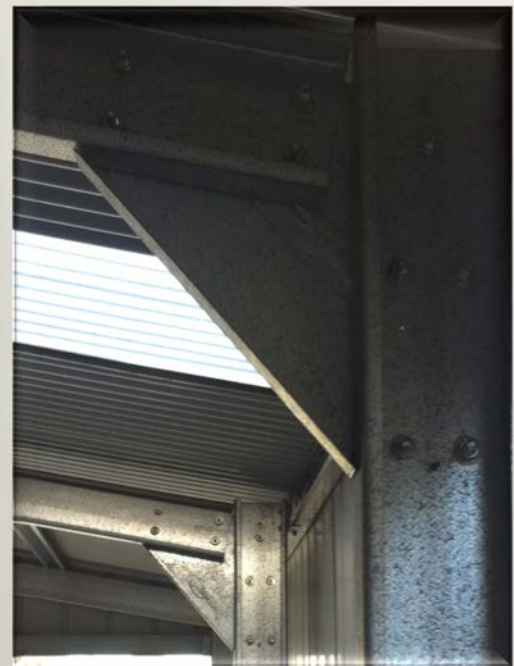


# Building type frames





# Premium



# Super





# Deluxe

