



# weathertex

timber made perfect, naturally

Cladding | Panels | Weatherboard



## Product Portfolio









EcoWall Smooth



Weathergroove 150 Woodsman

# The right choice

When you purchase Weathertex you are buying from an ethically sound company that supports local jobs and our environment, all the while creating a brilliant product we believe in. Now that's something to get behind... naturally.

Weathertex is a manufacturer of natural Australian hardwood Weatherboards and Architectural Panels. Our products are made in NSW, at the original 1939 factory using a unique process found nowhere else in the world.

100% Australian owned and manufactured, Weathertex uses certified state forest or private hardwoods from controlled sources. Proud and determined to promote environmental and sustainable performance measures, Weathertex has worked hard to ensure its products have a better than zero carbon footprint on the environment. Weathertex has been through a rigorous evaluation from Global GreenTag to determine our "green performance" and we are proud to announce we have the FIRST GLOBAL manufactured product to receive a Platinum certification with a GreenRate Level A for our Natural products, and Gold Certification for all our flat primed profiles.

Weathertex is also proud to announce being voted Australia's Number 1 Most Trusted Brand in 2016, in the Architecture and Design annual 'Top Trusted Brand' survey. With over 341 nominated brands and over 13,000 votes, this survey reveals Australia's top brands within the architecture, building, construction and design industries. Weathertex also won Number 1 Most Trusted Brand Winner in the 'External Wall Materials' category.

Have you heard of the Programme for the Endorsement of Forest Certification, or PEFC? The Programme is an international non profit, non-governmental organization dedicated to promoting Sustainable Forest Management through independent third-party certification. With over 30 endorsed national certification systems and more than 240 million hectares of certified forests, PEFC is the world's largest forest certification system.

PEFC works through the entire forest supply chain promoting good forest practices and ensuring products are produced following the highest ecological, social and ethical standards. The PEFC logo enables customers and consumers to identify products from sustainably managed forests.

For more information on our environmental standards and certifications, visit <http://www.pefc.org/> and [www.globalgreentag.com](http://www.globalgreentag.com).



**VOTED No.1  
MOST TRUSTED  
BRAND**

ARCHITECTURE  
**DESIGN**  
TRUSTED BRANDS  
WINNER No.1 BRAND

2016



# The right benefits

- **Australian made and owned** - proudly made in the Hunter, NSW.
- **Sustainable** - GreenTag certification and a better than zero carbon footprint.
- **Warranty** - Guaranteed not to rot, split or crack for up to 25 years.
- **Low maintenance** - on average, repainting on primed range is required every 15 years.
- **Value for money** - lightweight product, simple installation. Single person install for the Primelok range.
- **Easy to install** - only standard carpenter's tools are required.
- **Longevity** - natural Australian timber, made to last.
- **Termite Resistant** - Sugars and starches are removed.
- **Safe** - can be sawn or cut indoors.
- **Quicker to install** - all profiles\* can be direct fixed to frame.
- **Reliable** - Voted Number 1 'Most Trusted Brand' of Architecture and Designs 2016 poll, and category winner in 'External Wall Materials.'



**THE FIRST MANUFACTURED PRODUCT  
GLOBALLY TO ACHIEVE PLATINUM  
GREENTAG™ CERTIFICATION**

\*excluding Rubix





Weathergroove 150 Natural



Weathergroove 150 Natural

# Natural Cladding

The Natural range is an unprimed board which provides a unique appearance, with the characteristics and looks of raw, undressed timber. The Natural surface is pressed to create a woodgrain effect. Its rough, deep cut pattern shows all the knots, grains and imperfections of natural timber. It can be left to weather naturally or be stained.

When the Natural surface is treated, the look of fresh brown timber is maintained. When allowed to weather naturally, the depth of colour will vary, subject to location and sun exposure.

Weathertex's natural finished products are covered by a 10 year warranty not to rot, split or crack. Please see the warranty section of the Weathertex website for full details.

Weathertex can be used internally and as an external wall cladding in bushfire attack levels up to and including BAL 19 construction.



Selflok Ecogroove 150 Natural

NATURAL



Download the  
installation manual



\* Refer to the Weathertex  
Manufacturer's Warranty  
Conditions



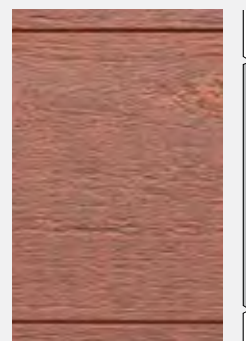
SELFLOK  
ECOGROOVE 150<sup>^</sup>  
NATURAL  
Width: 300mm



SELFLOK  
ECOGROOVE 300<sup>^</sup>  
NATURAL  
Width: 300mm



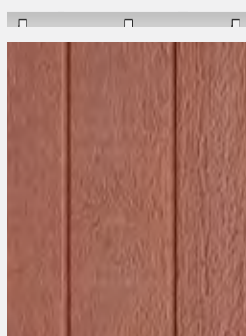
SELFLOK  
VGROOVE 150<sup>^</sup>  
NATURAL  
Width: 300mm



SELFLOK  
VGROOVE 300<sup>^</sup>  
NATURAL  
Width: 300mm



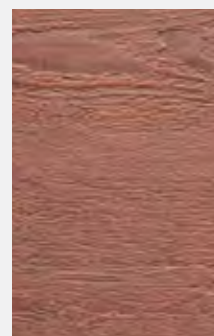
WALL SHINGLES  
Length: 1195mm  
Width: 225mm



WEATHERGROOVE  
150 NATURAL  
3660 X 1196mm



WEATHERGROOVE 300  
NATURAL  
3660 x 1196mm



ECOWALL NATURAL  
3660 x 1220mm

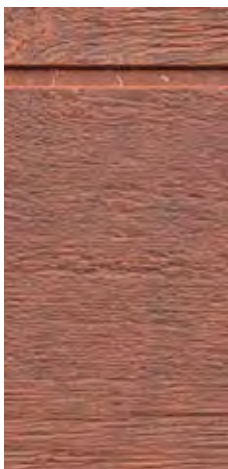
\*All Weatherboards are 3660 mm in length and 9.5 mm in thickness. <sup>^</sup> Refers to groove spacing.

Colour of product will differ to photos which have been lightened for printing.



# Natural Styles

## RETAIN ORIGINAL COLOUR



Weathertex Natural begins as a dark hardwood colour. Left uncoated it will lighten. To retain the original colour the boards should be stained. Cabots Aquadeck New Natural or Intergrain Enviropro Cedar Cyprus will closest match the original colour.

If you choose to lighten the boards but want to restore them to their original colour, you can do so at any time. Clean the boards with Cabots deck clean or similar, and a sturdy deck clean brush before staining.

## UNSEALED (Naturally Lighten)

Left to weather naturally by the sun, the timber will lighten and 'silver off' after a period of time. This can produce some beautiful results that become a unique feature of the construction. For best results use this technique on buildings that are exposed to full sun and aren't obscured by fences, trees or awnings. Weathertex is made with Australian hardwood timber and colours may slightly vary season to season.

To stop the silvering off process the boards can be stained at any time which will protect the boards from the sun, as well as allow for a range of colours and depth. Boards can be brought back to their original dark colour by first scrubbing with a deck cleaner and then applying the appropriate coloured stain.

## COLOUR STAIN & SEALED

Weathertex Natural range can be stained and sealed in the same manner as other hardwood timbers. Wash the boards down first with Cabots deck cleaner, Intergrain Revive or a similar product. Make sure the boards are clean and dry before staining. When staining follow the direction of the cladding to ensure each board has an even coating.

Coat the boards with a roller first before cutting in the edges. Add another coat, then cut in again. A third coat is optional, and there is no need to cut in the edges again on the third coat. Keep a wet edge throughout to make sure visible layers aren't seen on the finished product.

We don't recommend a clear sealant, instead we recommend Cabots Aquadeck or Intergrain Enviropro on the Weathertex Natural range. Please make sure to follow all product instructions when staining as they may vary.



**0 MONTHS:** Recently built, this shows the beginning colour of Weathertex Natural boards.



**4 MONTHS:** The board shows signs of lightening.



**7 MONTHS:** The board is continuing to lighten.



**17 MONTHS:** The boards are now a light blonde colour.



**36 MONTHS:** The boards are now very light, and are about to begin to be restored.



**CLEANING:** Wash the boards with a product like Intergrain Reviver or Cabots Deck Clean and a firm brush.



**STAINING:** Stain in the same direction that the boards run - vertical for vertical cladding.



**COMPLETE:** After 3 coats the timber is restored and is now UV protected.

**Note:** This project is only an example of the lightening and restoring process. Different projects will lighten at different speeds depending on location and exposure to sunlight.

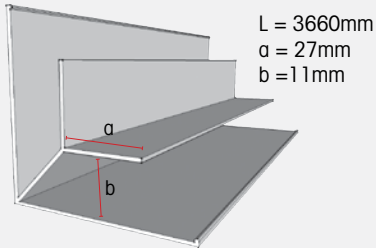


# Natural Accessories

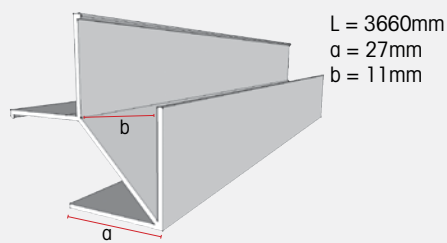
## Trimtec accessories

\*made from anodised aluminium

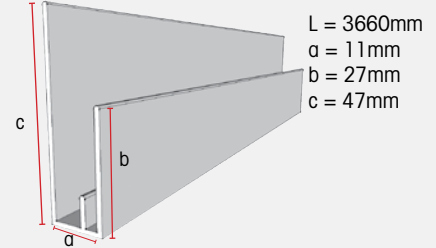
### SMALL INTERNAL LF ALUMINIUM CORNER



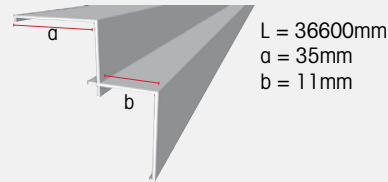
### SMALL EXTERNAL LF ALUMINIUM CORNER



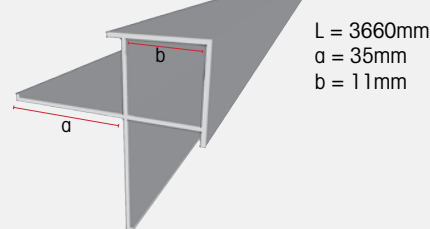
### SMALL END STOP/ WINDOW SURROUND



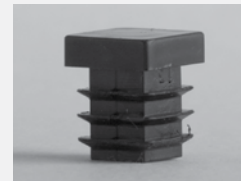
### SMALL INTERNAL ALUMINIUM CORNER



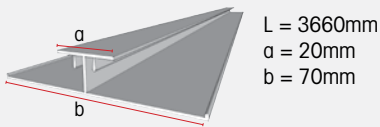
### SMALL EXTERNAL ALUMINIUM CORNER



### SMALL CORNER PLUG



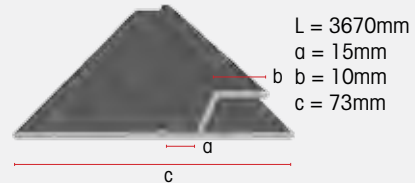
### LONG VERTICAL ALUMINIUM JOINER



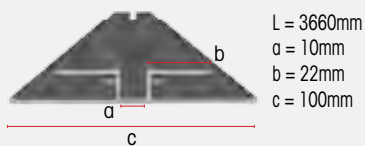
### ALUMINIUM Z FLASHING



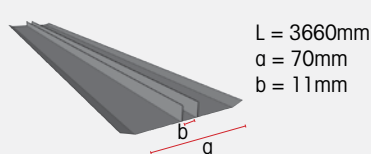
### SMALL ALUMINIUM Z FLASHING



### DEEP CHANNEL JOINER LF



### ALUMINIUM DEEP CHANNEL JOINER



## Cavity wall system (optional)

### CAVITY CLOSER



L = 1830mm  
a = Large 20mm  
Small 10mm

### CAVITY BATTENS



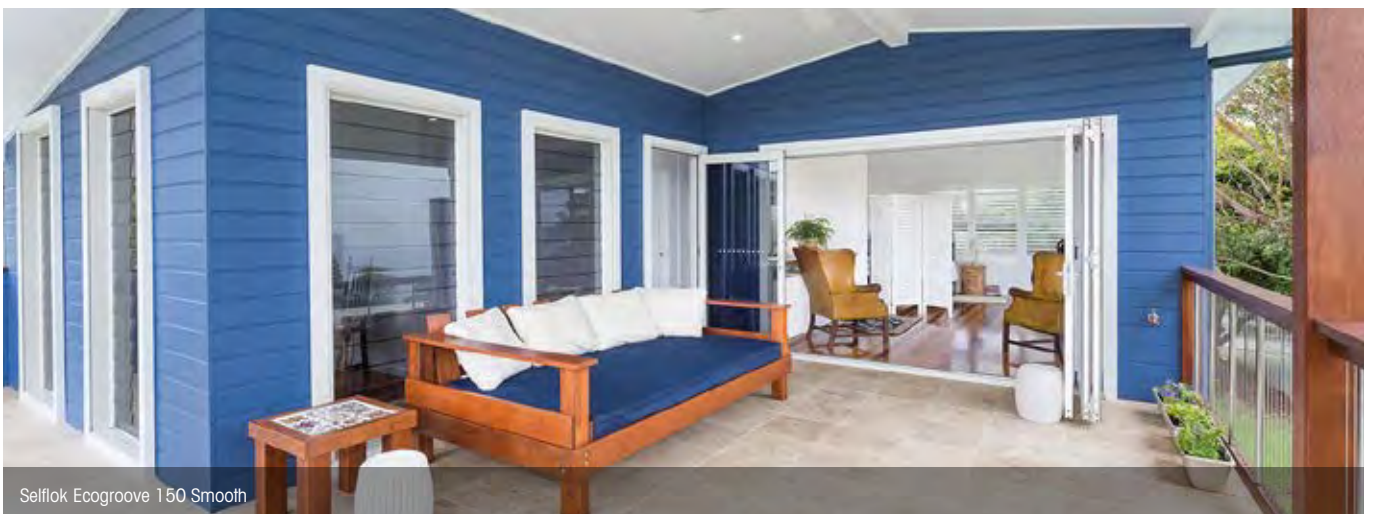
1220mmx 45mm  
For all cavity constructions













# Selflok Weatherboards

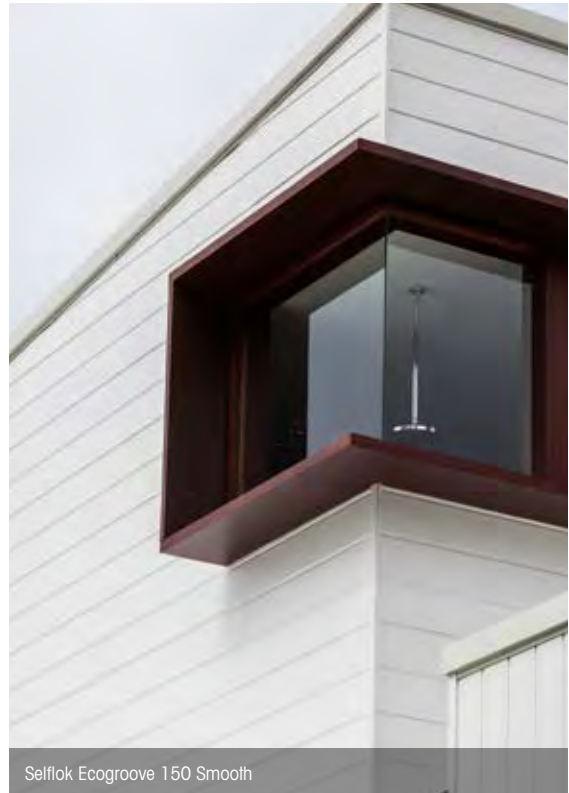
A favourite in the Weathertex family, Selflok Weatherboards have the simplest self-locking system, which allows every board to self gauge. The precise routing gives the product that beautiful and unique ship lapped profile that makes it the first choice for many.

In the Selflok range are the increasingly popular Selflok Ecogroove Weatherboards. The Selflok Ecogroove Smooth is the ideal choice for a smooth-to-touch finish, whereas the Selflok Ecogroove Woodsman provides the distinct wood grain texture of natural timber. Both are available in varying sizes.

## Advantages

- The unique lapping system allows a quick and easy installation.
- It is a durable and lightweight product.
- Requires only standard DIY cutting tools.
- All profiles can be direct fixed to frame.
- Cavity systems can be used as an additional option.

Weathertex can be used internally and as an external wall cladding in bushfire attack levels up to and including BAL 19 construction.



Selflok Ecogroove 150 Smooth



Download the installation manual



Selflok Ecogroove Range



\* Refer to the Weathertex Manufacturer's Warranty Conditions



SELFLOK  
ECOGROOVE 150<sup>^</sup>  
SMOOTH  
Width: 300mm



SELFLOK  
ECOGROOVE 150<sup>^</sup>  
WOODSMAN  
Width: 300mm



SELFLOK  
ECOGROOVE 300<sup>^</sup>  
SMOOTH  
Width: 300mm



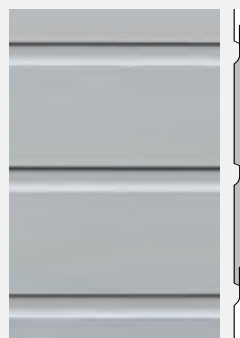
SELFLOK  
ECOGROOVE 300<sup>^</sup>  
WOODSMAN  
Width: 300mm



SELFLOK MILLWOOD  
SMOOTH  
Width: 300mm



SELFLOK MILLWOOD  
RUFF-SAWN  
Width: 300mm



SELFLOK TEXWOOD  
SMOOTH  
Width: 300mm



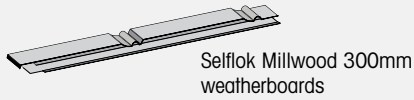
SELFLOK OLD COLONIAL  
SMOOTH  
Width: 300mm

\*All Weatherboards are 3660 mm in length and 9.5 mm in thickness. ^ Refers to groove spacing.

# Selflok Accessories

## Weathertex accessories

### MILLWOOD JOINERS



### OLD COLONIAL JOINERS



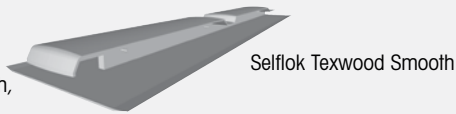
### ECOGROOVE 150 JOINERS



### ECOGROOVE 300 JOINERS



### TEXWOOD JOINERS



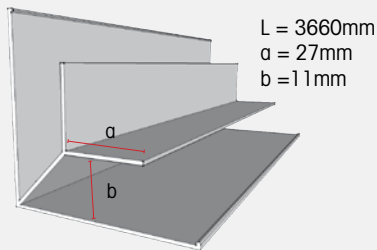
### 300MM CONCEALED JOINERS



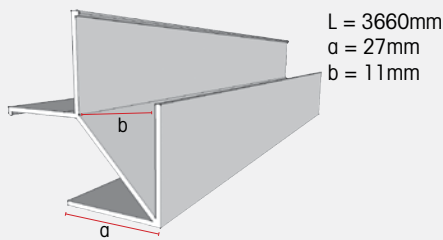
**Note:** All joiners are installed off stud.

## Trimtec accessories \*made from anodised aluminium

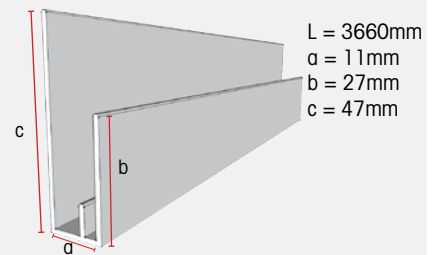
### SMALL INTERNAL LF ALUMINIUM CORNER



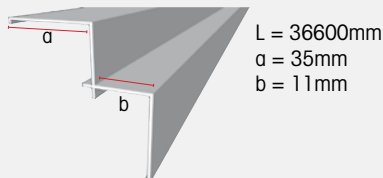
### SMALL EXTERNAL LF ALUMINIUM CORNER



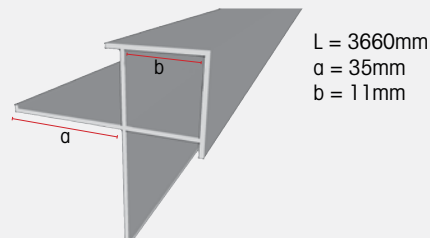
### SMALL END STOP/ WINDOW SURROUND



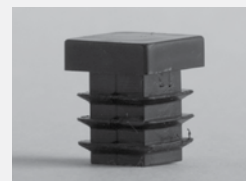
### SMALL INTERNAL ALUMINIUM CORNER



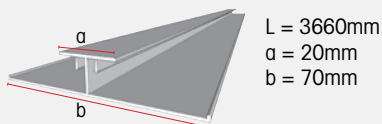
### SMALL EXTERNAL ALUMINIUM CORNER



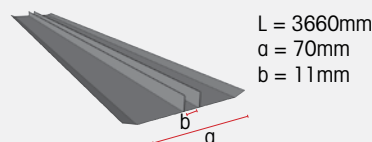
### SMALL CORNER PLUG



### LONG VERTICAL ALUMINIUM JOINER



### ALUMINIUM DEEP CHANNEL JOINER



## Cavity wall system (optional)

### SMALL CAVITY CLOSER

L = 1830mm  
a = 10mm



### CAVITY BATTENS







Selflok Millwood Smooth



Selflok Ecogroove 300 Smooth, Weathergroove 150 Ruff-Sawn



Selflok Millwood Smooth









Selflok Old Colonial Smooth



Selflok Ecogroove 150 Smooth





Primelok Federation Smooth



# Primelok Weatherboards

Our exclusive Weathertex Primelok fixing system ensures a perfect and easy alignment of the boards, reducing installation time. The overlapping of each board conceals fixings, resulting in smooth, clean, straight lines.

Primelok Weatherboards are suitable for gun nailing installation, and pre-primed as a standard feature.

Weathertex can be used internally and as an external wall cladding in bushfire attack levels up to and including BAL 19 construction.



Primelok Shadowwood Smooth

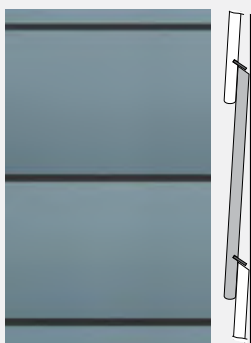
PRIMELOK



Download the installation manual



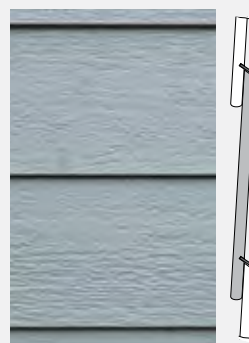
\* Refer to the Weathertex Manufacturer's Warranty Conditions



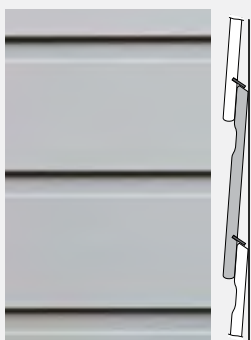
PRIMELOK  
SMOOTH  
Width: 200mm



PRIMELOK  
RUFF-SAWN  
Width: 200mm



PRIMELOK  
WOODSMAN  
Width: 200mm



PRIMELOK FEDERATION  
SMOOTH  
Width: 170mm



PRIMELOK FEDERATION  
RUFF-SAWN  
Width: 170mm



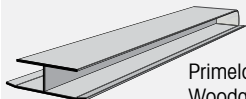
PRIMELOK  
SHADOWWOOD SMOOTH  
Width: 170mm

\*All Weatherboards are 3660 mm in length and 9.5 mm in thickness.

# Primelok Accessories

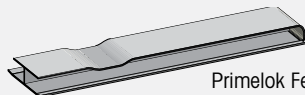
## Weathertex accessories

### TRADITIONAL OFF STUD JOINER



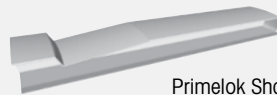
Primelok 200 smooth, or  
Woodgrain joiner for Primelok  
Ruff-Sawn, Primelok Woodsman

### FEDERATION JOINERS



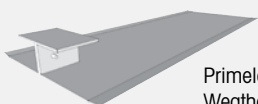
Primelok Federation Smooth,  
Primelok Federation Ruff-Sawn

### SHADOWOOD JOINERS



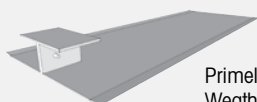
Primelok Shadowwood Smooth

### 170MM CONCEALED JOINER



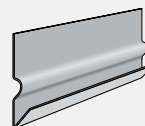
Primelok 170  
Weatherboards

### 200MM CONCEALED JOINER



Primelok 200mm  
Weatherboards

### PRIMELOK STARTER STRIP

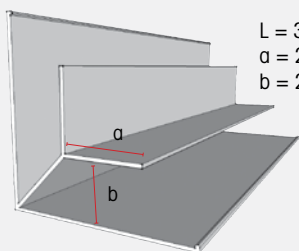


For ALL Primelok  
Weatherboards  
L = 1830mm

## Trimtec accessories

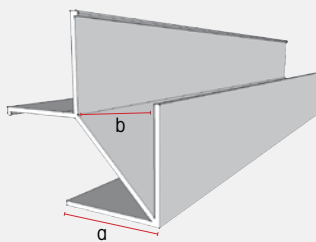
\*made from anodised aluminium

### LARGE INTERNAL LF ALUMINIUM CORNER



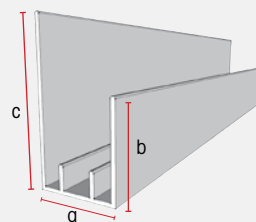
L = 3000mm  
a = 27mm  
b = 21mm

### LARGE EXTERNAL LF ALUMINIUM CORNER



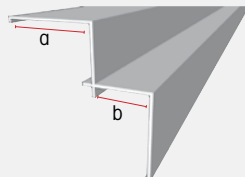
L = 3000mm  
a = 27mm  
b = 21mm

### LARGE END STOP/ WINDOW SURROUND



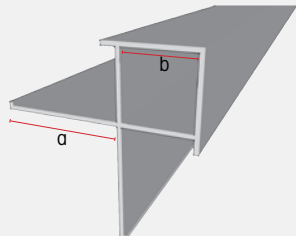
L = 3660mm  
a = 21mm  
b = 27mm  
c = 47mm

### LARGE INTERNAL ALUMINIUM CORNER



L = 3000mm  
a = 35mm  
b = 21mm

### LARGE EXTERNAL ALUMINIUM CORNER



L = 3000mm  
a = 35mm  
b = 21mm

### LARGE CORNER PLUG



Primelok 200 Smooth with traditional joiners

## Cavity wall system (optional)

### LARGE CAVITY CLOSER

L = 1830mm  
a = 20mm



### CAVITY BATTENS



1220mmx 45mm  
For all cavity constructions



Primelok Shadowwood Smooth





Primelok 200 Smooth



Primelok Shadowood Smooth









Primelok Shadowood Smooth



Primelok Shadowood Smooth



Classic Smooth 200



Classic 200 Smooth



# Classic Weatherboards

Weathertex Classic Weatherboards are truly an Australian classic. Choose Smooth or Ruff-Sawn surface finishes to create a clean, smart-looking home.

Weathertex Weatherboards are designed to blend beautifully with alternate building materials such as brick, render, stone and, of course, Weathertex Architectural Panels, providing limitless design and decorative solutions and applications.

Weathertex will complete your home with a high quality, highly durable and low maintenance product.

Weathertex can be used internally and as an external wall cladding in bushfire attack levels up to and including BAL 19 construction.



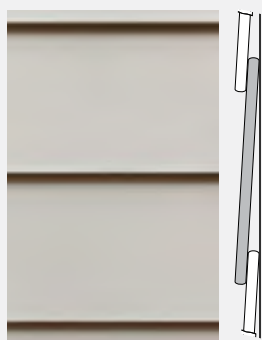
Classic 200 Smooth



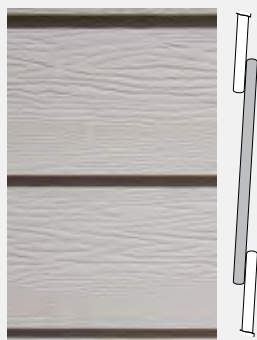
Download the installation manual



\* Refer to the Weathertex Manufacturer's Warranty Conditions



CLASSIC  
SMOOTH  
Width: 200 or 300 mm



CLASSIC  
RUFF-SAWN  
Width: 200 or 300 mm

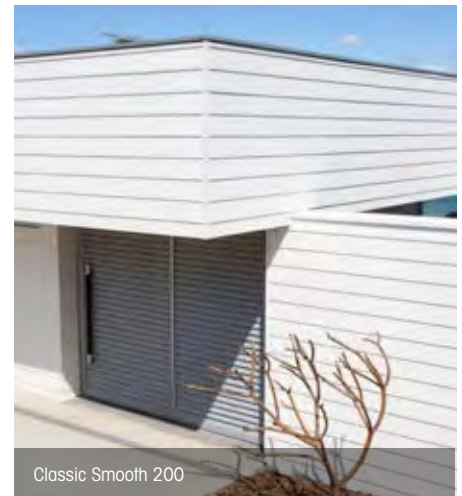


CLASSIC RUSTICATED  
SMOOTH  
Width: 200mm



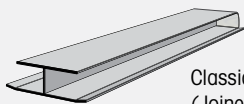
CLASSIC RUSTICATED  
RUFF-SAWN  
Width: 200mm

# Classic Accessories



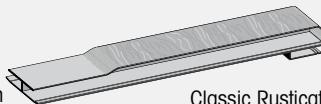
## Weathertex accessories \*made from PVC

### TRADITIONAL OFF STUD JOINER



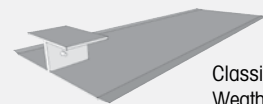
Classic 200 Smooth or Ruff-Sawn  
(Joiners in smooth or woodgrain),  
or Classic 300 (smooth)

### RUSTICATED JOINERS



Classic Rusticated 200  
Smooth or Ruff Sawn

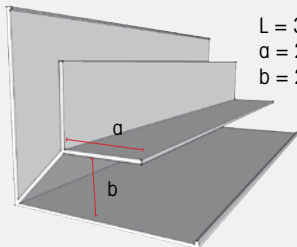
### 200MM CONCEALED JOINER



Classic 200mm  
Weatherboards.

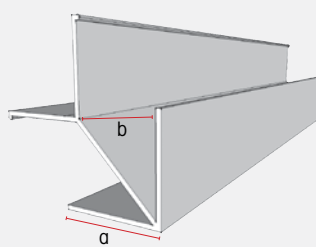
## Trimtec accessories \*made from anodised aluminium

### LARGE INTERNAL LF ALUMINIUM CORNER



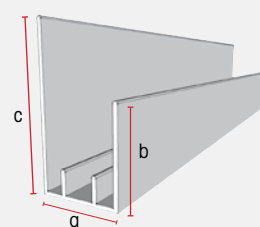
L = 3000mm  
a = 27mm  
b = 21mm

### LARGE EXTERNAL LF ALUMINIUM CORNER



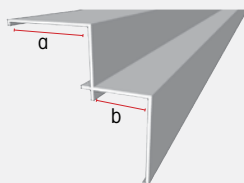
L = 3000mm  
a = 27mm  
b = 21mm

### LARGE END STOP/ WINDOW SURROUND



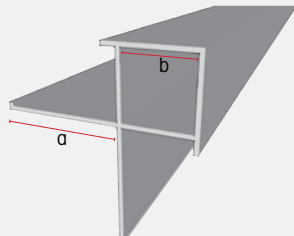
L = 3660mm  
a = 21mm  
b = 27mm  
c = 47mm

### LARGE INTERNAL ALUMINIUM CORNER



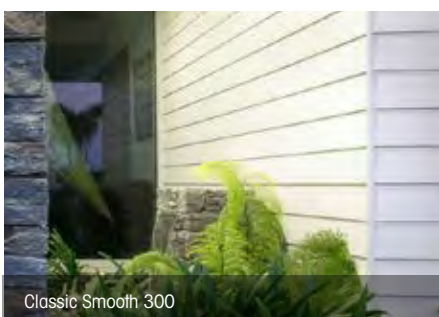
L = 3000mm  
a = 35mm  
b = 21mm

### LARGE EXTERNAL ALUMINIUM CORNER



L = 3000mm  
a = 35mm  
b = 21mm

### LARGE CORNER PLUG



## Cavity wall system (optional)

### LARGE CAVITY CLOSER

L = 1830mm  
a = 20mm



### CAVITY BATTENS



1220mmx 45mm  
For all cavity constructions



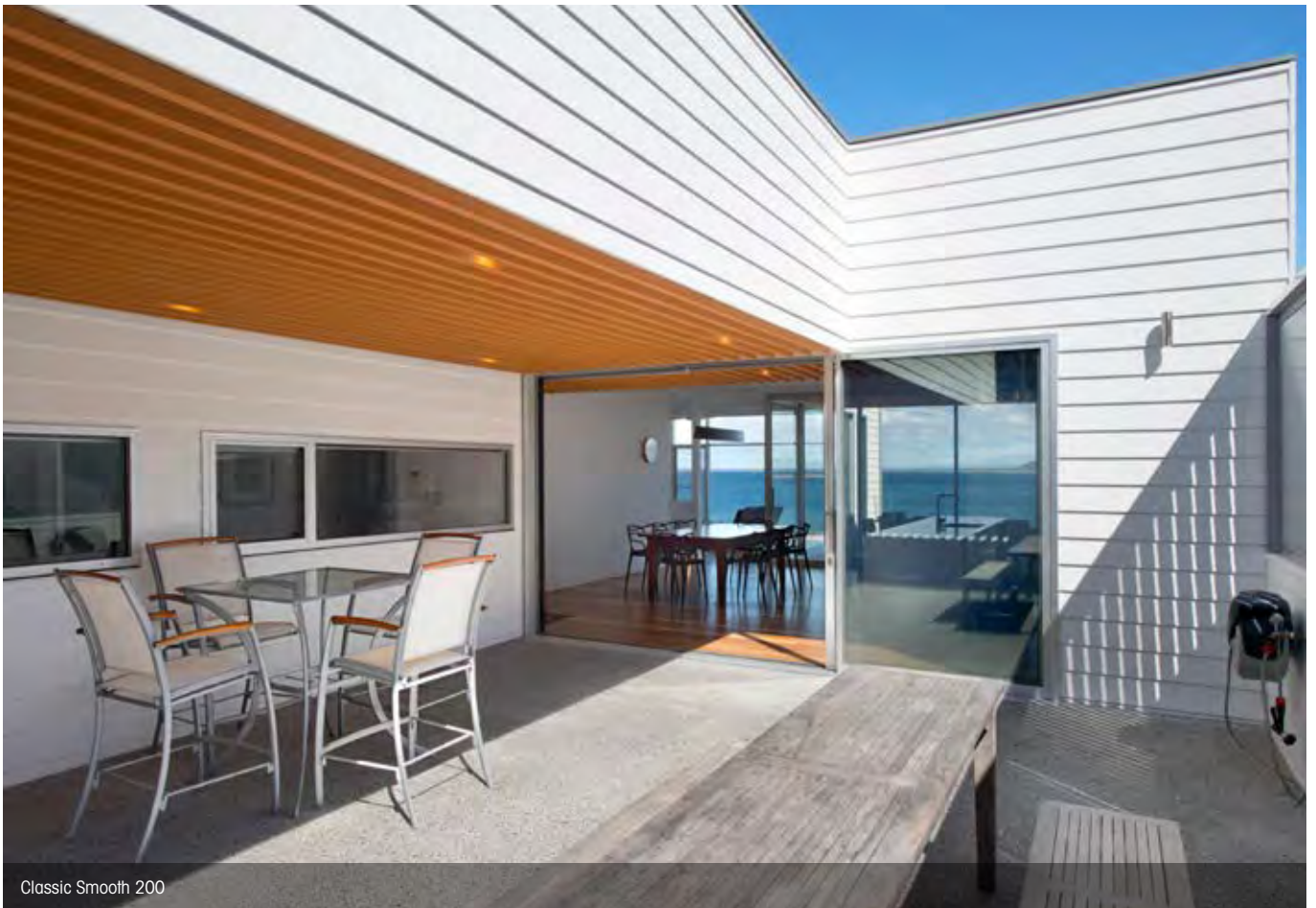


Classic Smooth 200 and Selflok Millwood Smooth

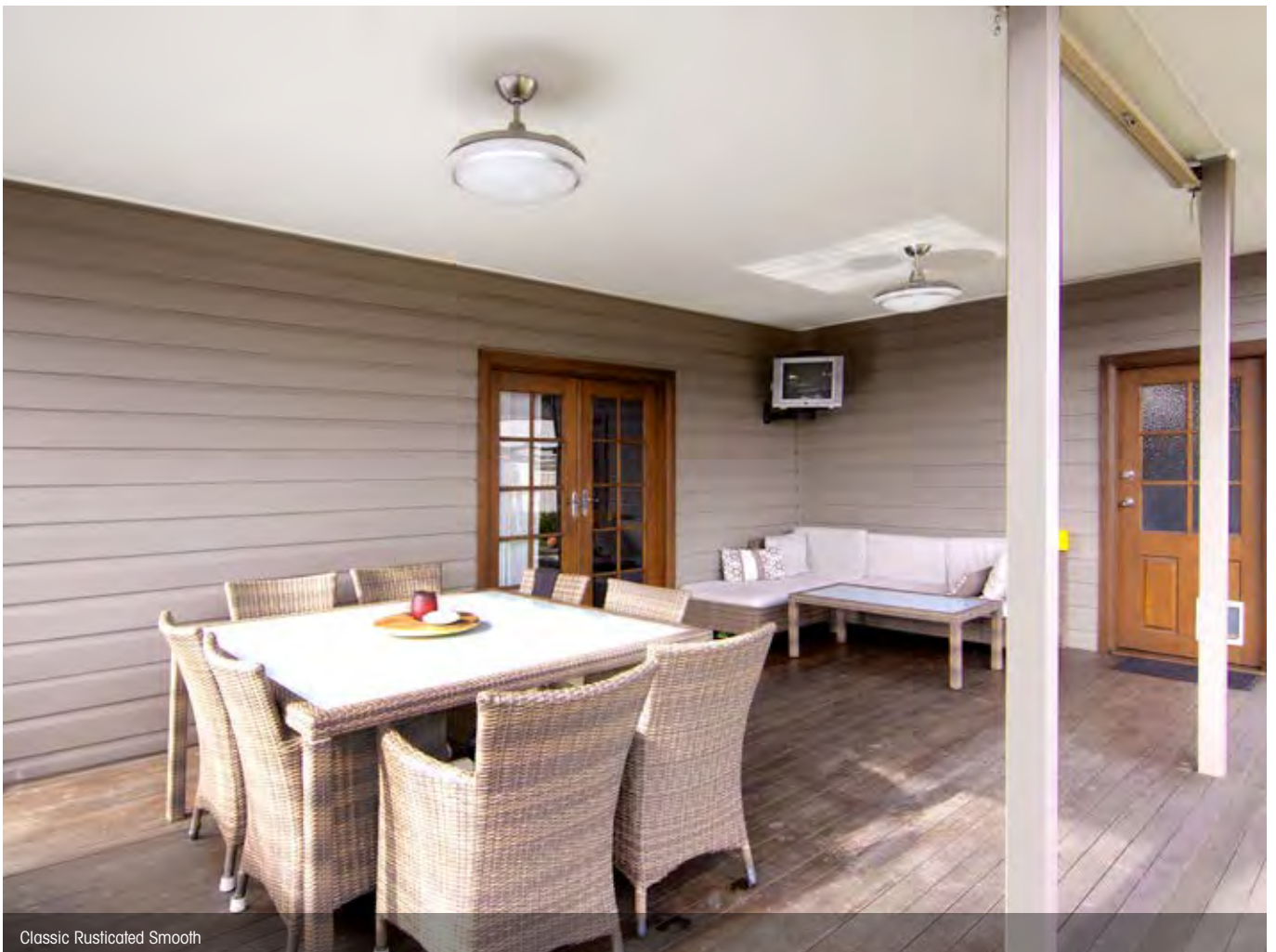


Classic Smooth 300





Classic Smooth 200



Classic Rusticated Smooth



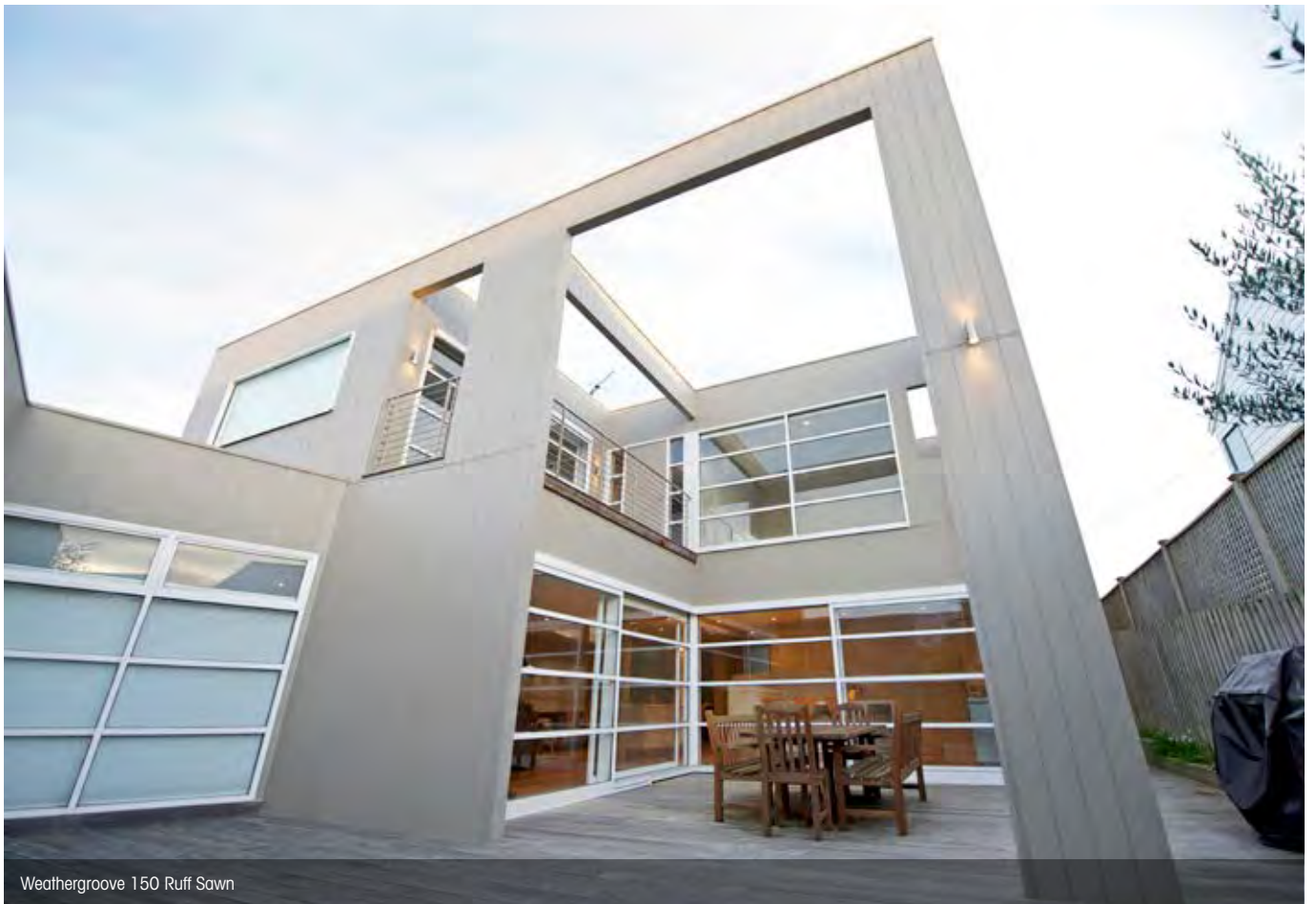


Classic Rusticated Smooth



Classic Rusticated Ruff-Sawn





Weathergroove 150 Ruff Sawn



Weathergroove 300 Smooth



# Weathergroove Panels

Weathergroove is the largest panel available in the Australian market. This vertically grooved panel is ideal for covering large areas in a short time and it's versatility offers endless possibilities.

For improved performance, an exclusive joining system has been designed to clip onto the rebated edges of each panel, blending in perfectly with each Weathergroove sheet for a continuous panel finish. Weathergroove also provides a safe and reliable means of structural bracing. Please see the Weathertex Installation Manual for details.

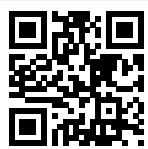
## Advantages

- Off-stud joining system
- Quick installation
- No silicone or adhesives required for installation

Weathertex can be used internally and as an external wall cladding in bushfire attack levels up to and including BAL 19 construction..



Weathergroove 150 Smooth



Download the installation guide



\* Refer to the Weathertex Manufacturer's Warranty Conditions

\* Only available in 3660mm x 1196mm and 2745mm x 1196mm



WEATHERGROOVE  
150 SMOOTH



WEATHERGROOVE  
150 RUFF-SAWN



WEATHERGROOVE  
150 WOODSMAN

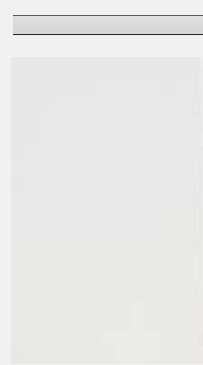


WEATHERGROOVE  
300 SMOOTH\*

WEATHERGROOVE SIZES	
3660 x 1196mm	
2440 x 1196mm	
2745 x 1196mm	
Thickness: 9.5mm	



WEATHERGROOVE  
600 SMOOTH\*

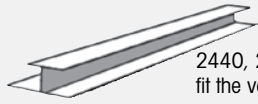


WEATHERGROOVE  
1200 SMOOTH\*

# Weathergroove Accessories

## Weathertex accessories

### WEATHERGROOVE JOINERS



2440, 2745, 3660mm to fit the varying panel sizes.

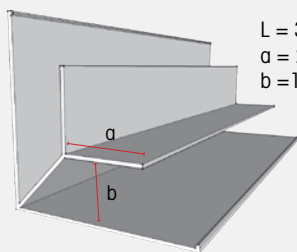


Weathergroove 150 Smooth and Trimtec Accessories

## Trimtec accessories

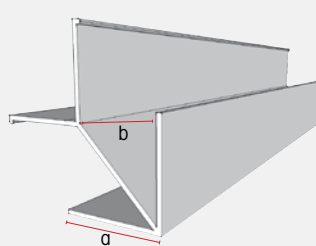
\*made from anodised aluminium

### SMALL INTERNAL LF ALUMINIUM CORNER



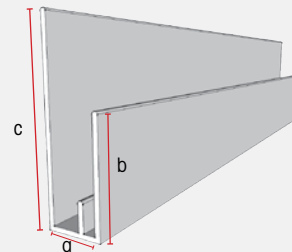
L = 3660mm  
a = 27mm  
b = 11mm

### SMALL EXTERNAL LF ALUMINIUM CORNER



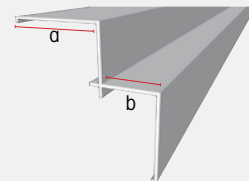
L = 3660mm  
a = 27mm  
b = 11mm

### SMALL END STOP/ WINDOW SURROUND



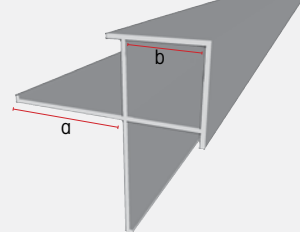
L = 3660mm  
a = 11mm  
b = 27mm  
c = 47mm

### SMALL INTERNAL ALUMINIUM CORNER



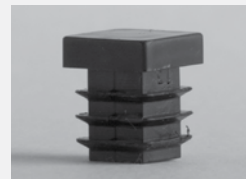
L = 3660mm  
a = 35mm  
b = 11mm

### SMALL EXTERNAL ALUMINIUM CORNER

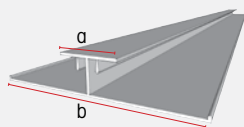


L = 3660mm  
a = 35mm  
b = 11mm

### SMALL CORNER PLUG



### LONG VERTICAL ALUMINIUM JOINER



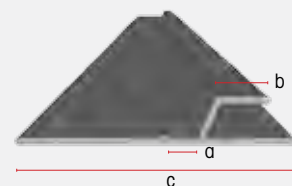
L = 3660mm  
a = 20mm  
b = 70mm

### ALUMINIUM Z FLASHING



L = 3660mm  
a = 27mm  
b = 11mm

### SMALL ALUMINIUM Z FLASHING



L = 3670mm  
a = 15mm  
b = 10mm  
c = 73mm



Weathergroove 600 Smooth

## Cavity wall system (optional)

### SMALL CAVITY CLOSER

L = 1830mm  
a = 10mm



### CAVITY BATTENS

1220mm x 45mm  
For all cavity constructions



Weathergroove 150 Ruff-Sawn





Weathergroove 150 Woodsman



Weathergroove 150 Smooth



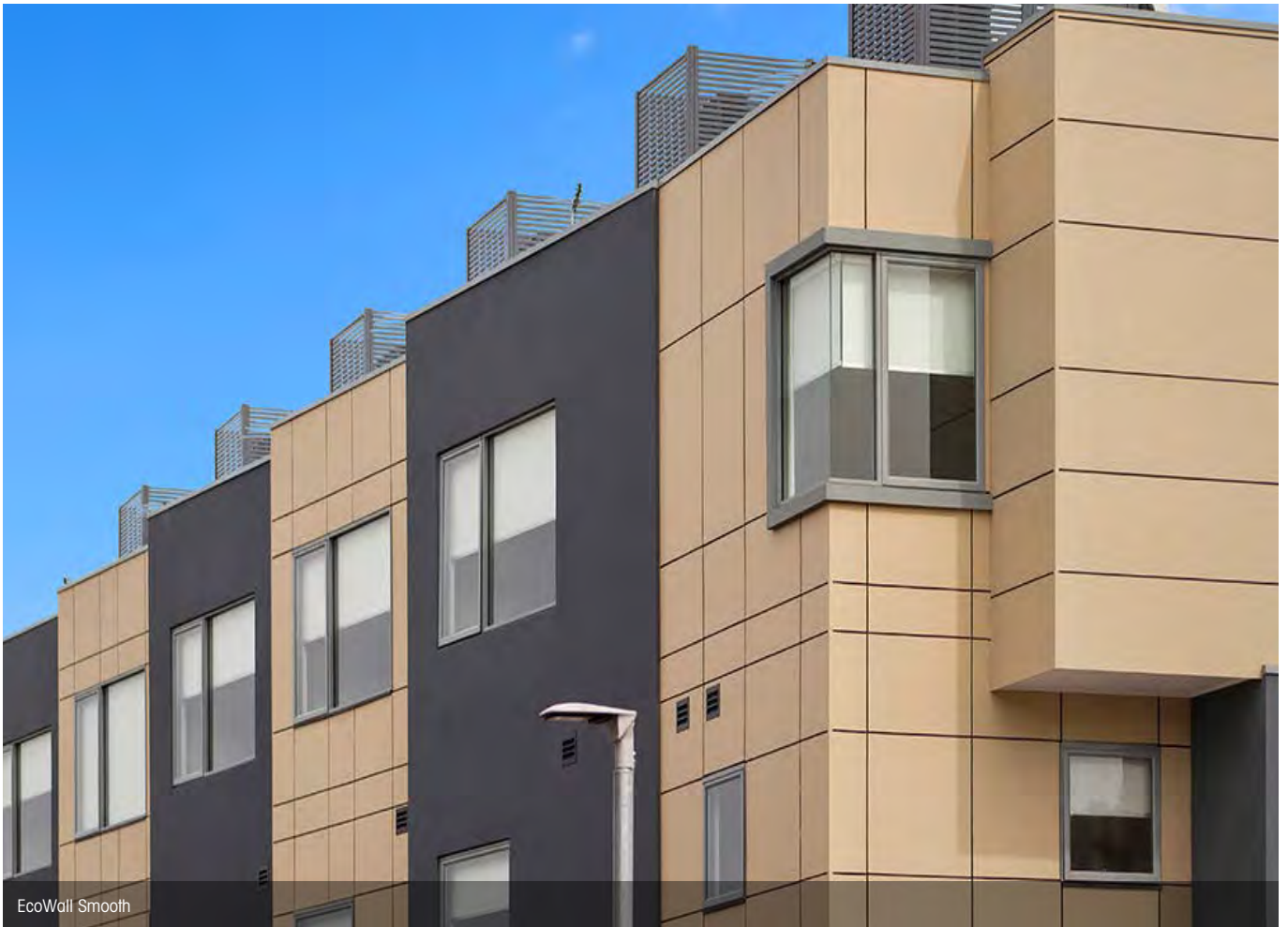




Weathergroove 150 Smooth and EcoWall Smooth



Weathergroove 150 Woodsman



EcoWall Smooth



EcoWall Smooth



# EcoWall Panels

EcoWall is one of the most durable, high impact and versatile types of panel available. The possibility of both vertical and horizontal express jointing lends flexibility to the pattern of your choice. Whether a modern architecturally designed home or a large commercial project, the decorative applications are unlimited.

EcoWall is an ideal choice when facing lightweight constraints. It complies with the requirements set by the External Hardboard in AS/NZS 1859.4: it is a strong and robust product, yet lightweight and the large size panels make installation quick and easy.

EcoWall durability makes it the best choice for:

- Wall and façade linings
- Exhibition buildings, sports facilities and
- Entertainment centers linings
- School halls
- Decorative linings in homes and commercial premises

Weatherex can be used internally and as an external wall cladding in bushfire attack levels up to and including BAL 19 construction.

## ECOWALL SMOOTH SIZES

3660 x 1220mm  
2745 x 1220mm  
2440 x 1220mm  
1220 x 1220mm  
1220 x 915mm

new  
sizes

Thickness: 9.5mm



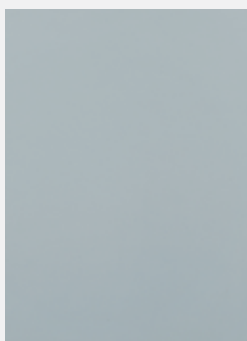
EcoWall Smooth



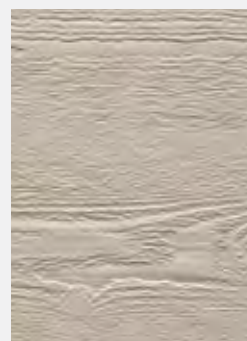
Download the  
installation manual



\* Refer to the Weatherex  
Manufacturer's Warranty  
Conditions



ECOWALL SMOOTH



ECOWALL WOODSMAN  
(Available in 3660mm only)

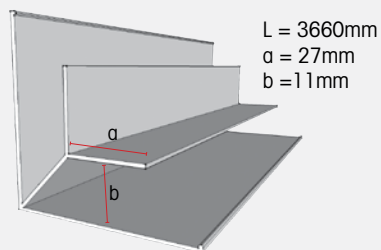
# EcoWall Accessories



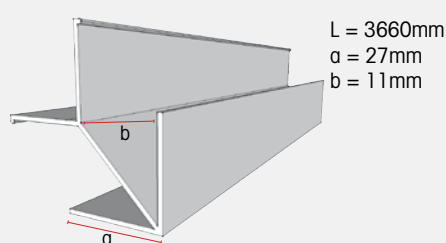
## Trimtec accessories

\*made from anodised aluminium

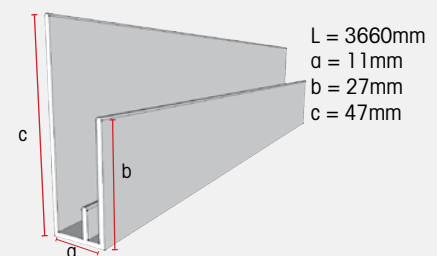
### SMALL INTERNAL LF ALUMINIUM CORNER



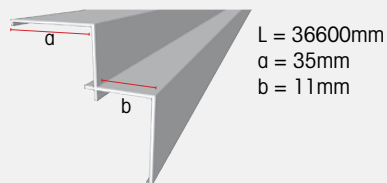
### SMALL EXTERNAL LF ALUMINIUM CORNER



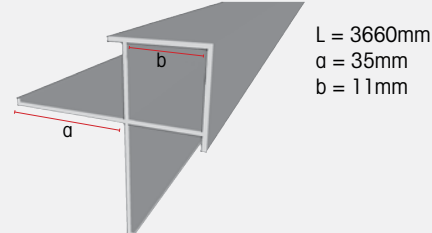
### SMALL END STOP/ WINDOW SURROUND



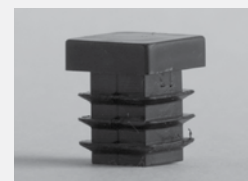
### SMALL INTERNAL ALUMINIUM CORNER



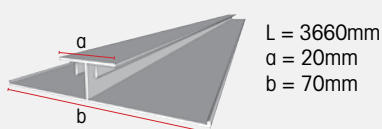
### SMALL EXTERNAL ALUMINIUM CORNER



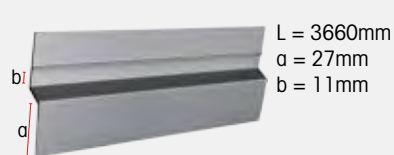
### SMALL CORNER PLUG



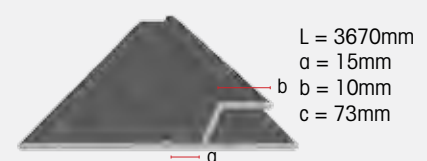
### LONG VERTICAL ALUMINIUM JOINER



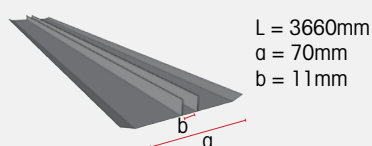
### ALUMINIUM Z FLASHING



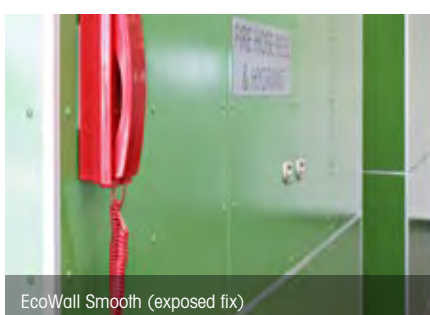
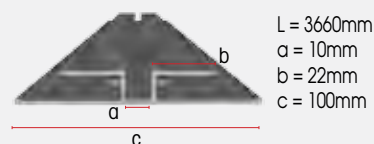
### SMALL ALUMINIUM Z FLASHING



### ALUMINIUM DEEP CHANNEL JOINER



### DEEP CHANNEL JOINER LF



## Cavity wall system (optional)

### SMALL CAVITY CLOSER

L = 1830mm  
a = 10mm



### CAVITY BATTENS

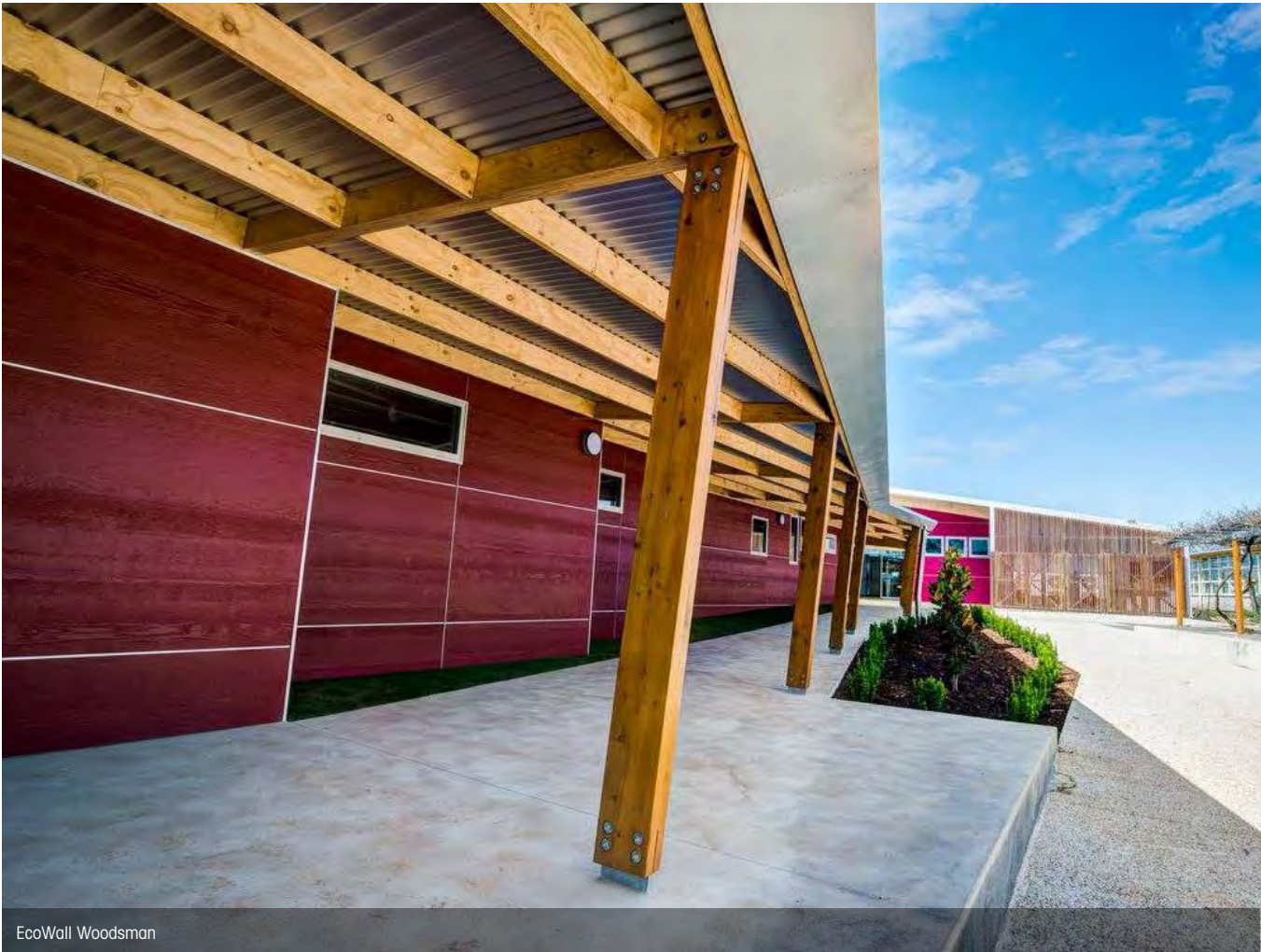


1220mm x 45mm  
For all cavity constructions





EcoWall Smooth

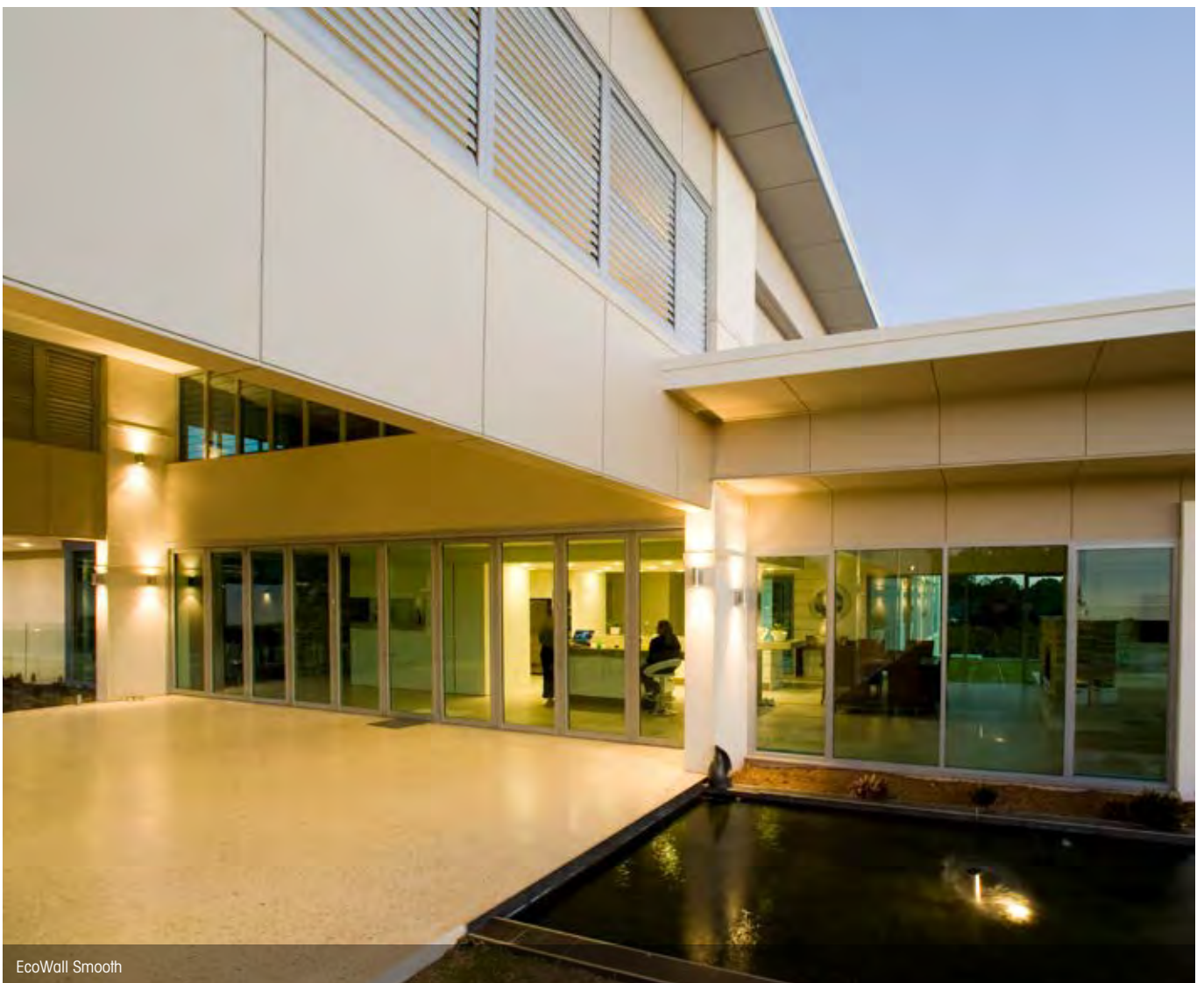


EcoWall Woodsman





EcoWall Smooth



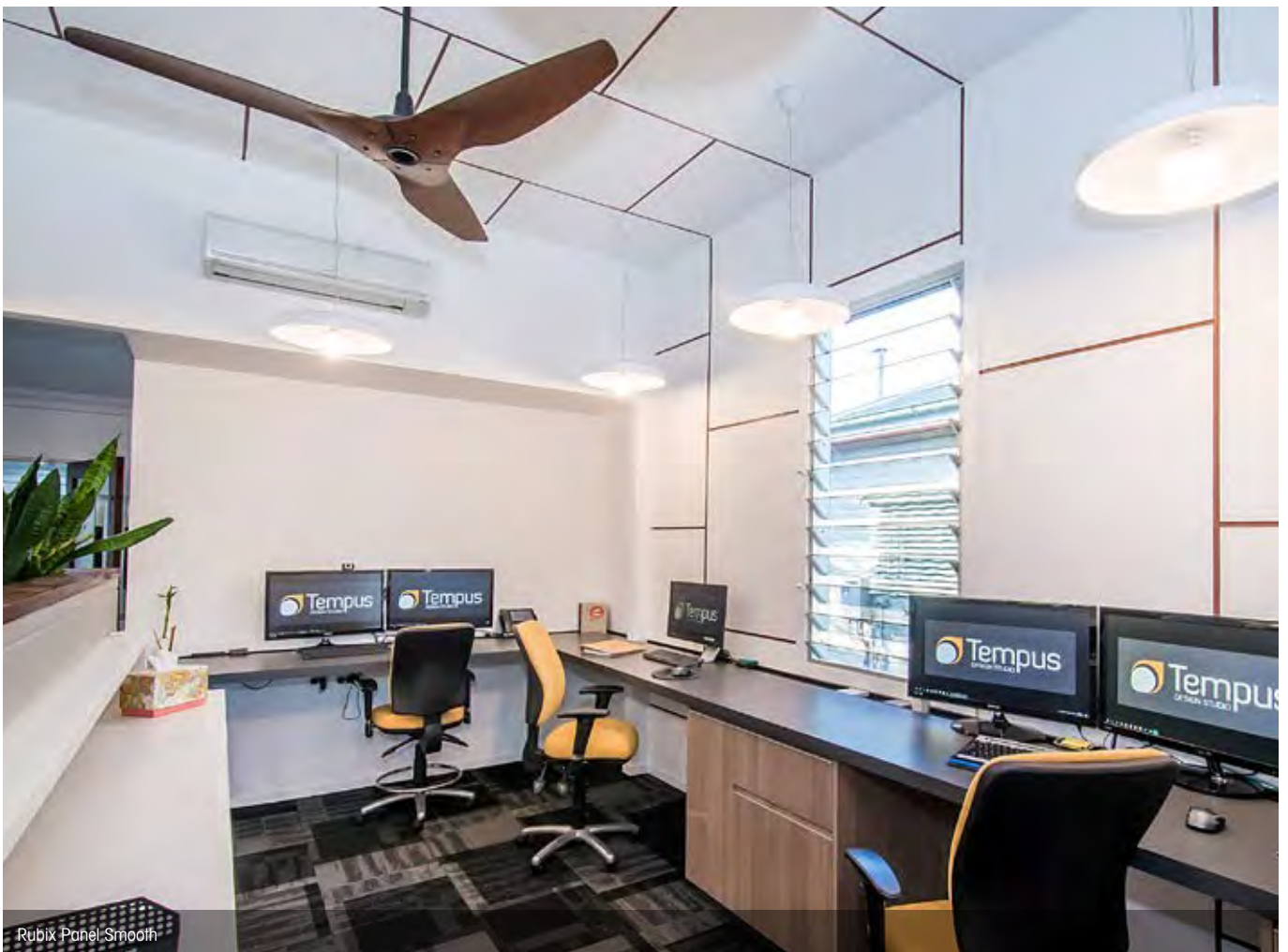
EcoWall Smooth







Rubix Panel Smooth, and Weathergroove 150 Ruff-Sawn



Rubix Panel Smooth



# Rubix Panels

Rubix Panel is a self-locking Architectural Panel available in square or rectangular panels designed to be joined on or off-stud.

Rubix Panel provides unprecedented flexibility and ease, since no joining accessories are needed for installation. This helps to eliminate the puzzle that comes with other matrix style products.

Rubix can be used for both internal and external applications. If using outside it should be installed with a cavity system.

Weathertex can be used as an external wall cladding in bushfire attack levels up to and including BAL 19 construction.



Rubix Panel Smooth



Rubix Panel Smooth



Download the  
installation manual



\* Refer to the Weathertex  
Manufacturer's Warranty  
Conditions



RUBIX PANEL  
SMOOTH

(IMAGE SHOWS 4 PANELS INTERLOCKING TOGETHER)

## RUBIX PANEL SIZES

1200 x 1200mm  
1200 x 900mm

Thickness: 9.5mm

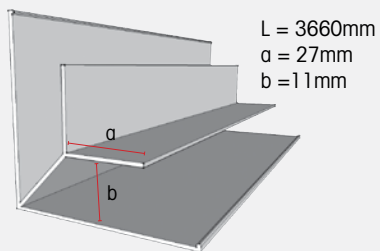
# Rubix Accessories



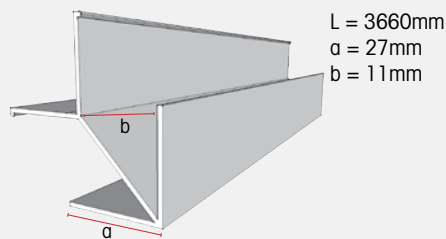
## Trimtec accessories

\*made from anodised aluminium

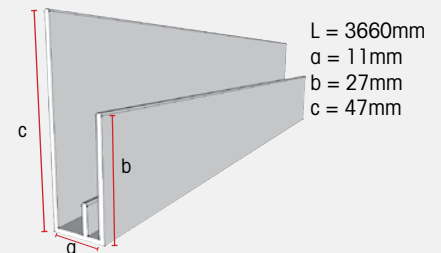
### SMALL INTERNAL LF ALUMINIUM CORNER



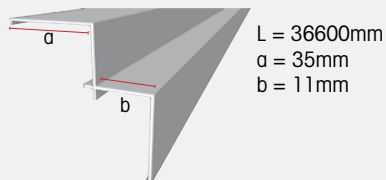
### SMALL EXTERNAL LF ALUMINIUM CORNER



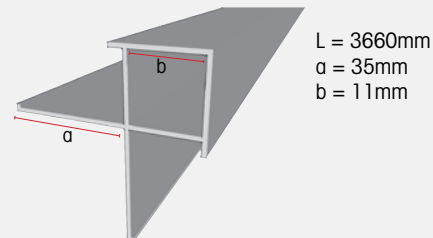
### SMALL END STOP/ WINDOW SURROUND



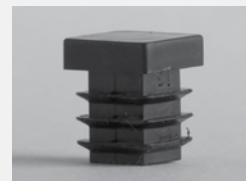
### SMALL INTERNAL ALUMINIUM CORNER



### SMALL EXTERNAL ALUMINIUM CORNER



### SMALL CORNER PLUG



## Cavity wall system

### SMALL CAVITY CLOSER

L = 1830mm  
a = 10mm



### CAVITY BATTENS



1220mmx 45mm  
For all cavity constructions













VOTED No.1  
MOST TRUSTED  
BRAND

ARCHITECTURE  
**DESIGN**  
TRUSTED BRANDS  
— WINNER No.1 BRAND —

2016

EcoWall Smooth, Weathergroove 150 Natural, Primelok Smooth

 **weathertex**  
timber made perfect, naturally

weathertex.com.au Ph: 1800 040 080 Fax: 1800 647 926



Last updated Feb 2017  
Disclaimer: Product Portfolio to be used only as a guide.  
Always refer to the installation manual for correct installation & warranty.

\* Refer to the Weathertex Manufacturer's Warranty Conditions

Weathertex® is made in Australia by Weathertex Pty Ltd ABN 67 084 713 986  
PO Box 21, Raymond Terrace NSW 2324